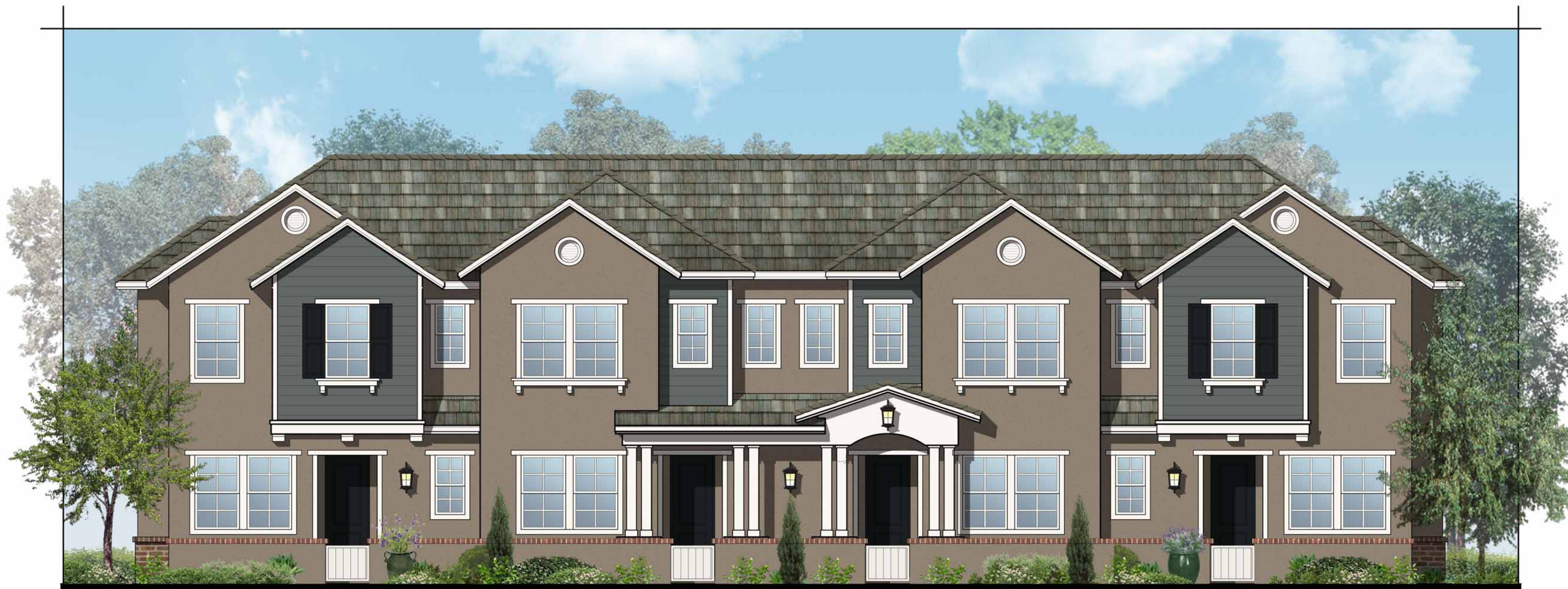


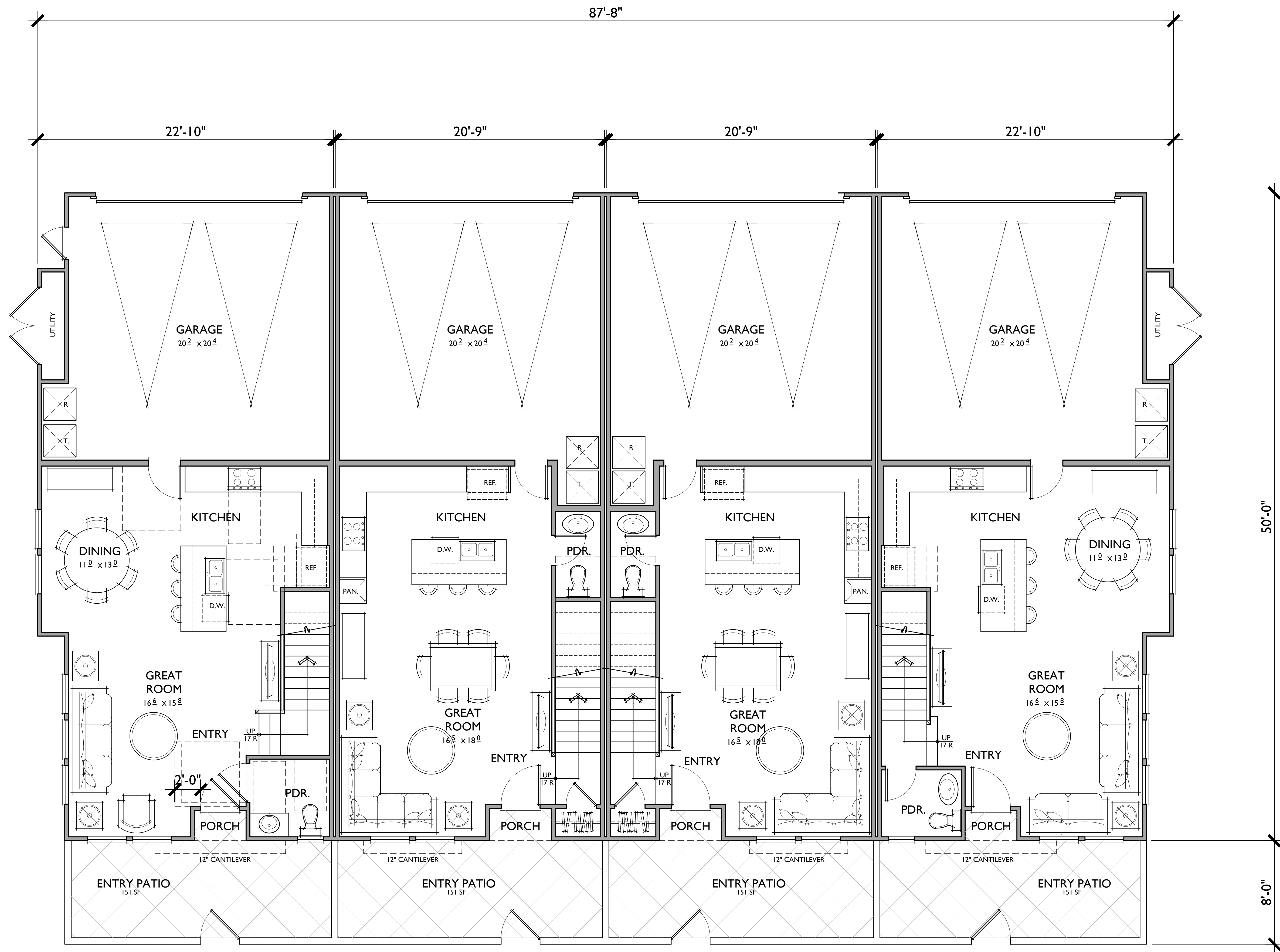
FRONT

A
1/4"=1'-0"



FRONT

B
1/4"=1'-0"

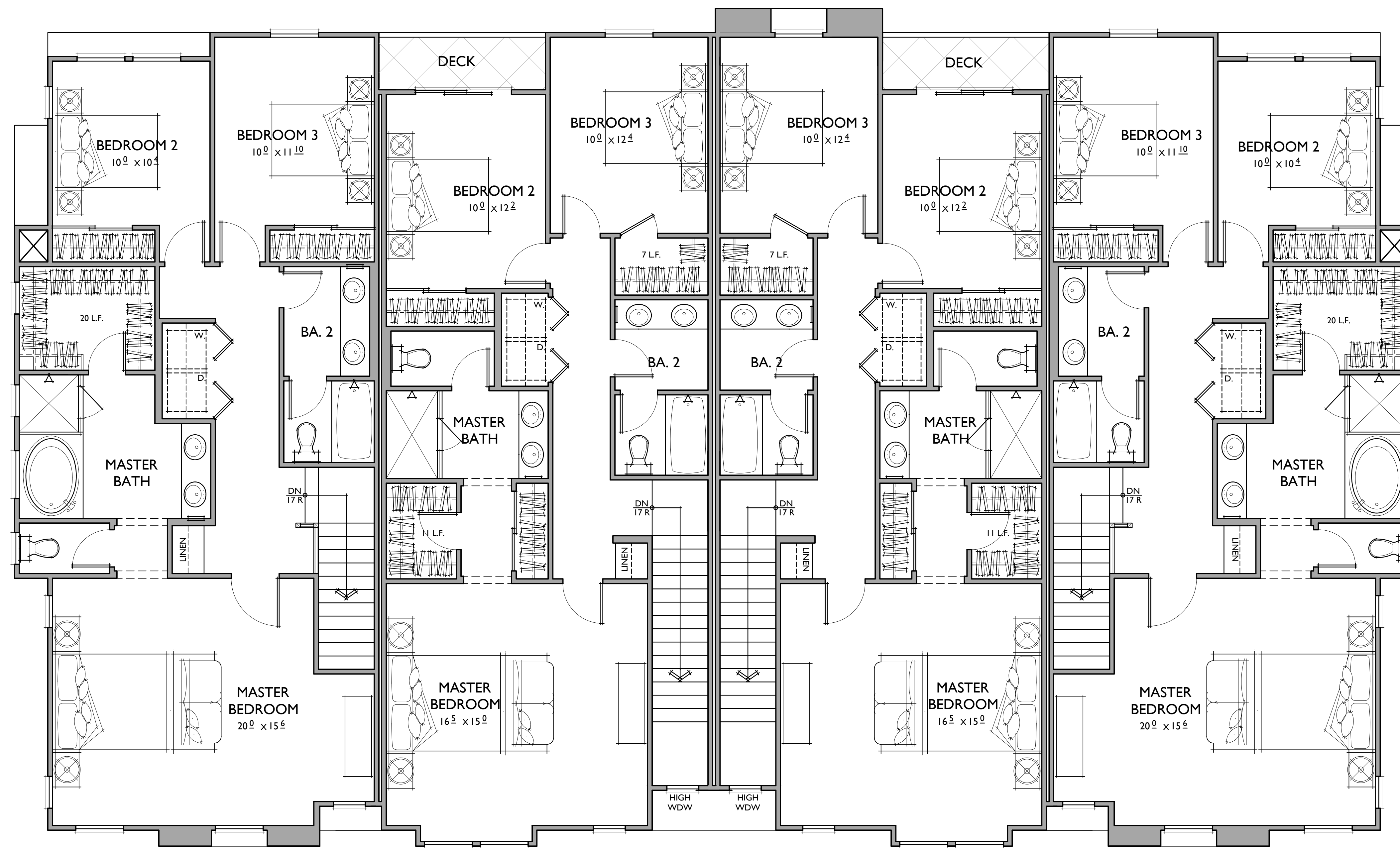


PLAN 3 (accessible)
3 BR / 2.5 BA
1,640 S.F.

PLAN 2
3 BR / 2.5 BA
1,509 S.F.

PLAN 2
3 BR / 2.5 BA
1,509 S.F.

PLAN 3
3 BR / 2.5 BA
1,640 S.F.

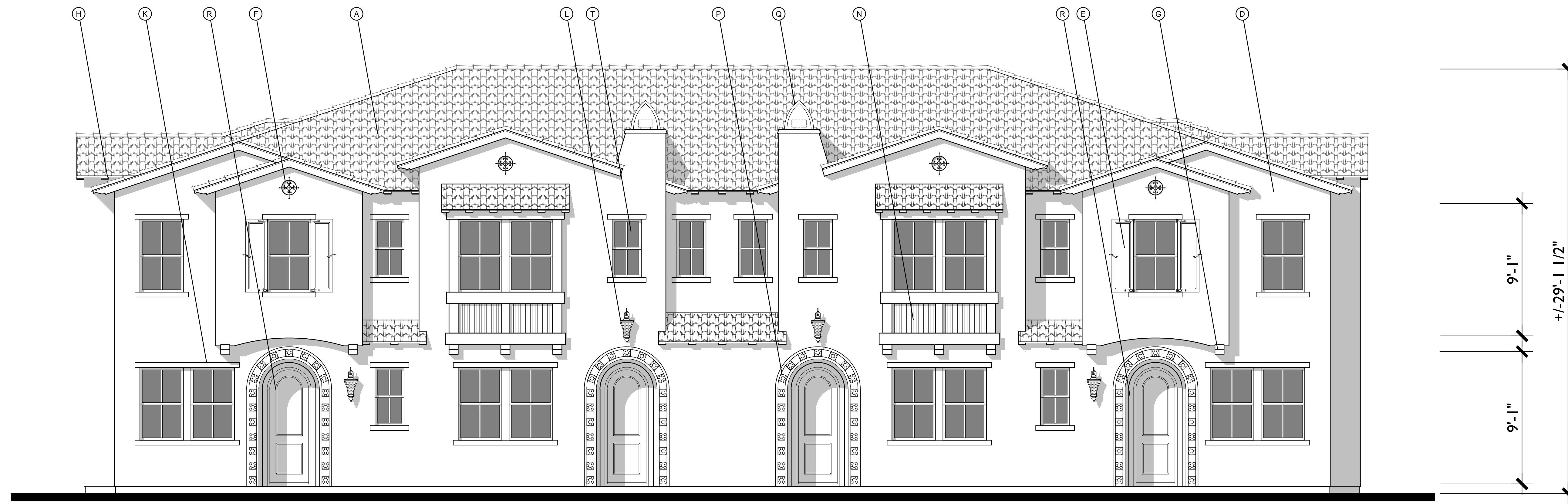


PLAN 3

PLAN 2

PLAN 2

PLAN 3



FRONT

A
1/4"=1'-0"

MATERIAL LEGEND

- | | | |
|---------------------------|-----------------------------|---------------------------|
| A. CONCRETE S' TILE | H. WOOD RAFTER | Q. DECORATIVE CHIMNEY CAP |
| B. FLAT CONCRETE TILE | I. BRICK VENEER | R. COMPOSITE DOOR |
| C. ROLL-UP GARAGE DOOR | J. BRICK TRIM | S. WOOD FASCIA |
| D. SMOOTH FINISH STUCCO | K. FOAM TRIM | T. VINYL WINDOWS |
| E. COMPOSITE SHUTTER | L. DECORATIVE LIGHT FIXTURE | U. HORIZONTAL LAP SIDING |
| F. DECORATIVE GABLE END | M. WOOD POST | V. DECORATIVE METAL POT |
| G. SIMULATED WOOD, SHAPED | N. HARDIE PANEL | W. STONE VENEER |
| FOAM CORBEL | O. METAL RAILING | |
| | P. DECORATIVE TILE | |



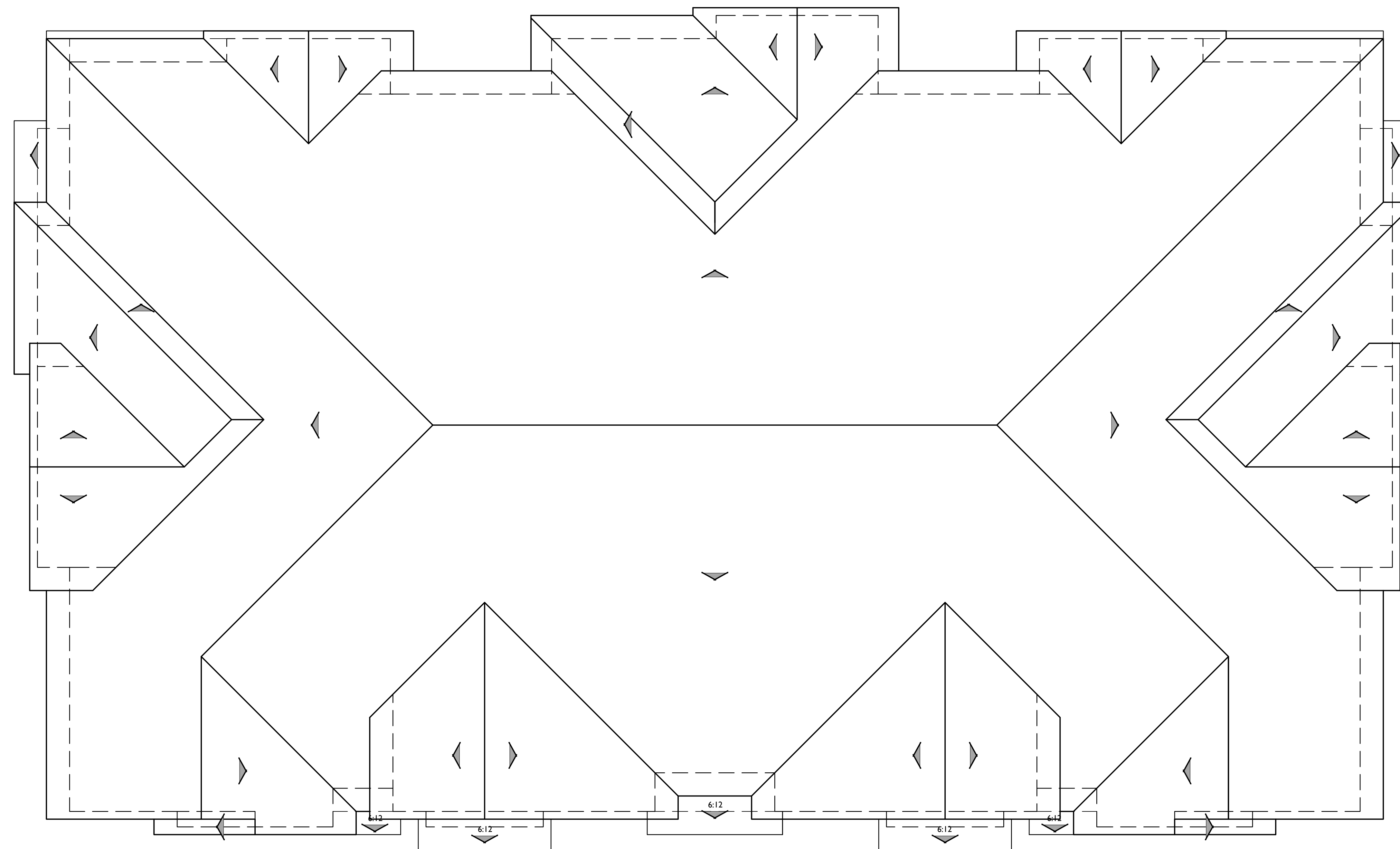
REAR



LEFT



RIGHT



ROOF PLAN

PITCH: 4:12
 RAKE: 6"
 EAVE: 18"
 ROOF MATERIAL: CONCRETE 'S' TILE

A

1/8"=1'-0"



FRONT

B
1/4"=1'-0"

MATERIAL LEGEND

- | | | |
|--|-----------------------------|----------------------------------|
| A. CONCRETE 'S' TILE | H. WOOD RAFTER | Q. DECORATIVE CHIMNEY CAP |
| B. FLAT CONCRETE TILE | I. BRICK VENEER | R. COMPOSITE DOOR |
| C. ROLL-UP GARAGE DOOR | J. BRICK TRIM | S. WOOD FASCIA |
| D. SMOOTH FINISH STUCCO | K. FOAM TRIM | T. VINYL WINDOWS |
| E. COMPOSITE SHUTTER | L. DECORATIVE LIGHT FIXTURE | U. HORIZONTAL LAP SIDING |
| F. DECORATIVE GABLE END
DETAIL | M. WOOD POST | V. DECORATIVE METAL POT
SHELF |
| G. SIMULATED WOOD, SHAPED
FOAM CORBEL | N. HARDIE PANEL | W. STONE VENEER |
| | O. METAL RAILING | |
| | P. DECORATIVE TILE | |



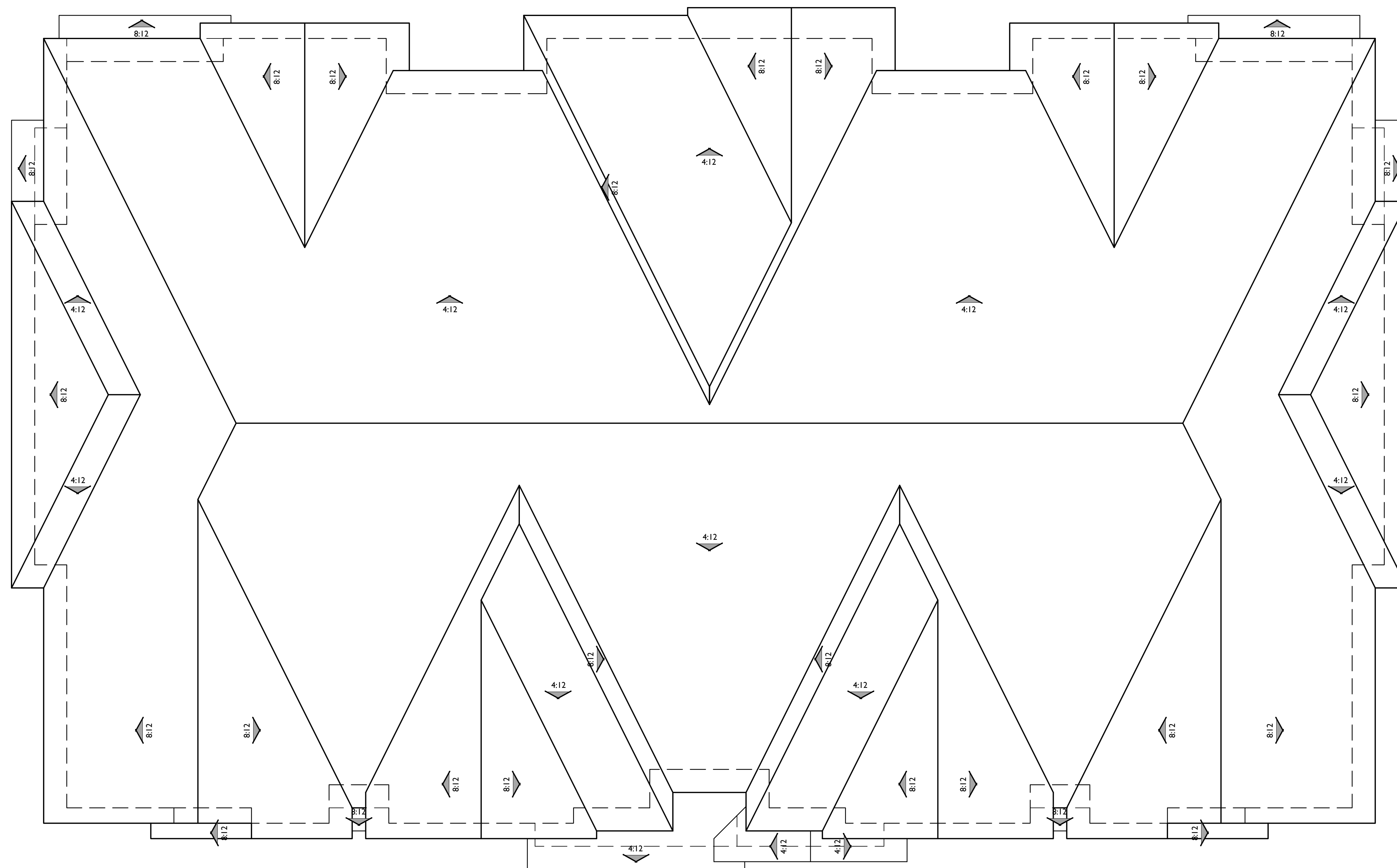
REAR



LEFT



RIGHT



ROOF PLAN

PITCH: 8:12 U.N.O.
 RAKE: 12"
 EAVE: 18"
 ROOF MATERIAL: FLAT CONCRETE TILE

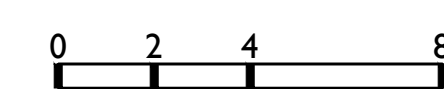
B
1/8"=1'-0"

4 PLEX

Roof Plan - American Traditional

LEUNG PROPERTY - PRODUCT 2

Antioch, Ca



799.24098



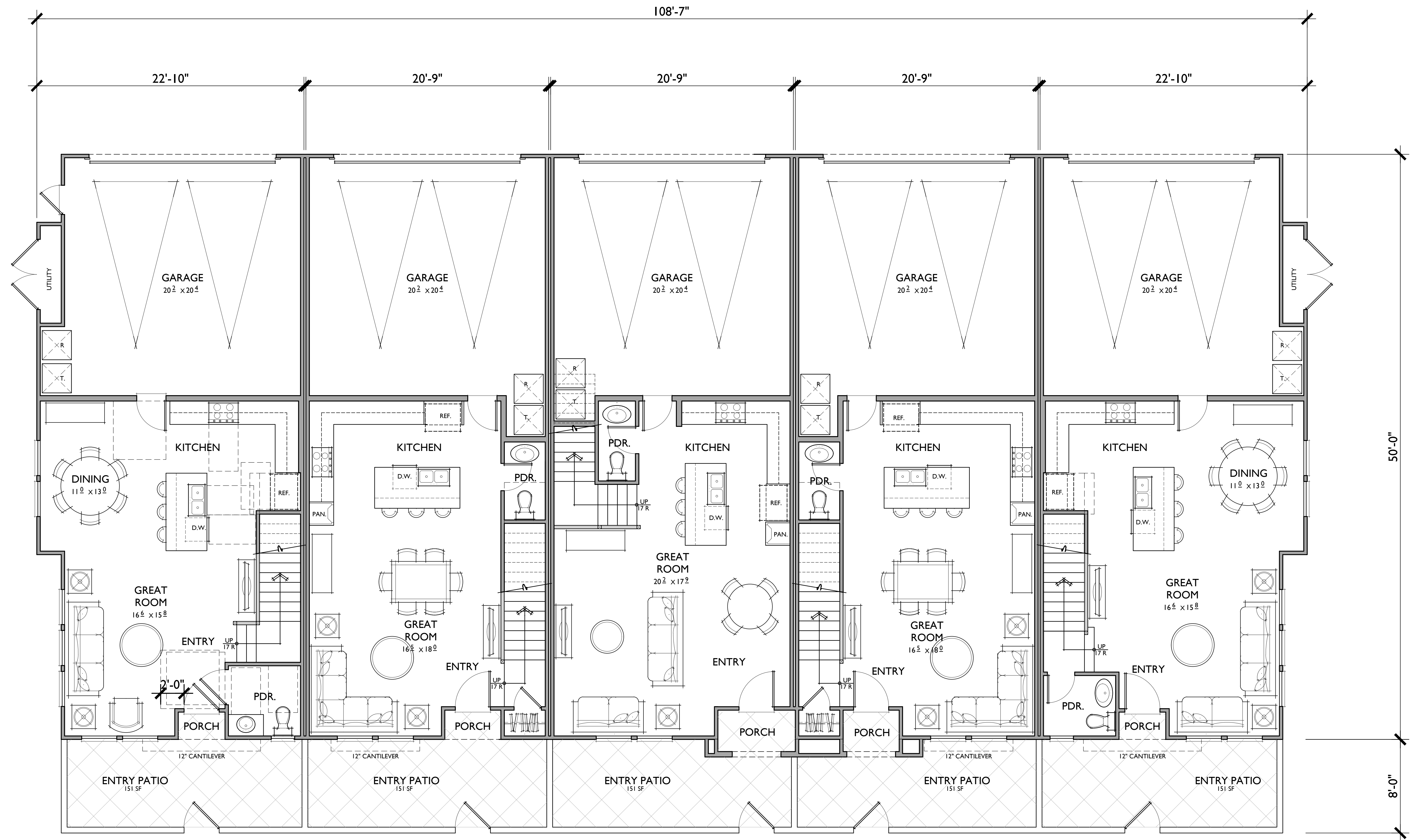
FRONT

A
1/4"=1'-0"



FRONT

B
1/4"=1'-0"



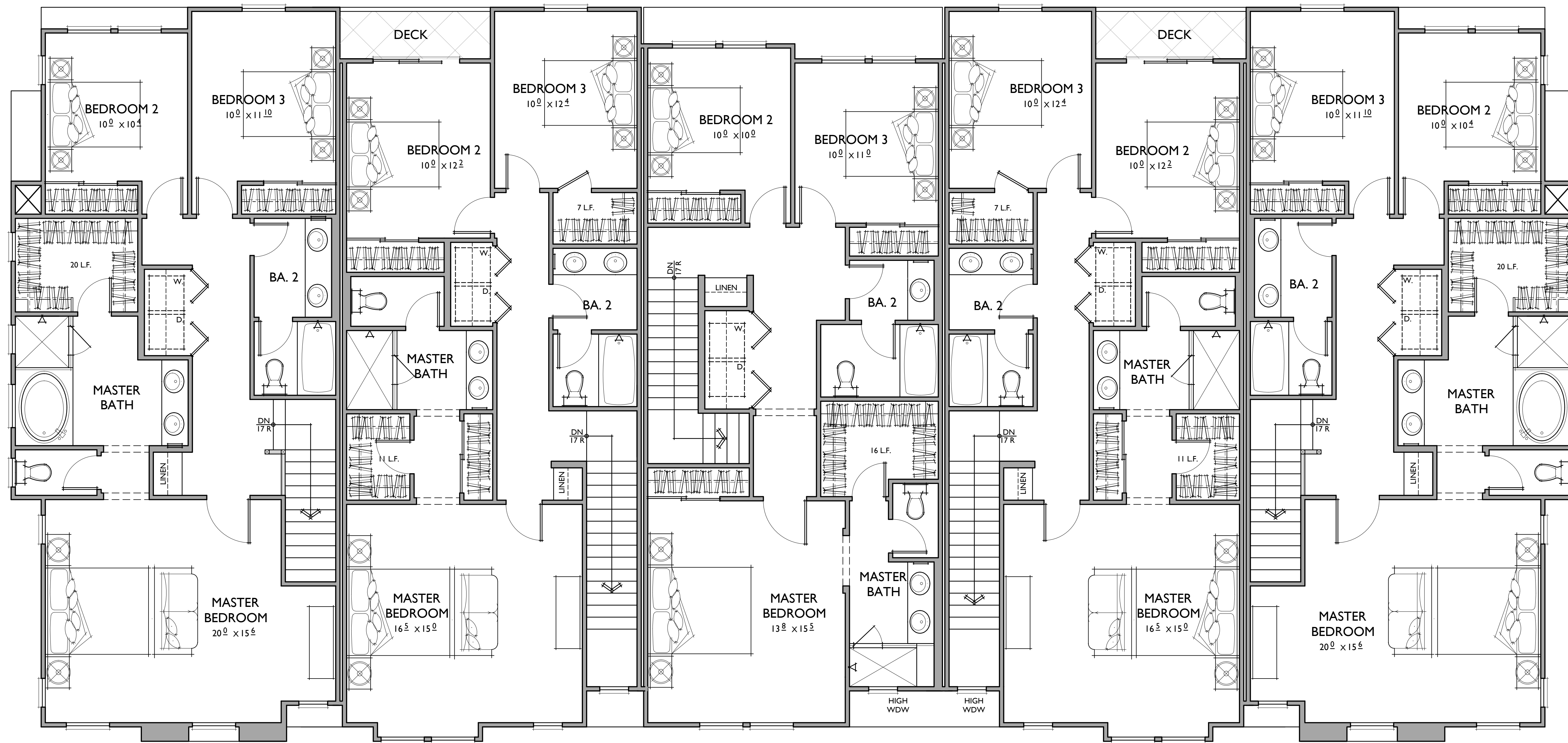
PLAN 3 (accessible)
3 BR / 2.5 BA
1,640 S.F.

PLAN 2
3 BR / 2.5 BA
1,509 S.F.

PLAN 1
3 BR / 2.5 BA
1,472 S.F.

PLAN 2
3 BR / 2.5 BA
1,509 S.F.

PLAN 3
3 BR / 2.5 BA
1,640 S.F.



PLAN 3

PLAN 2

PLAN 1

PLAN 2

PLAN 3



FRONT

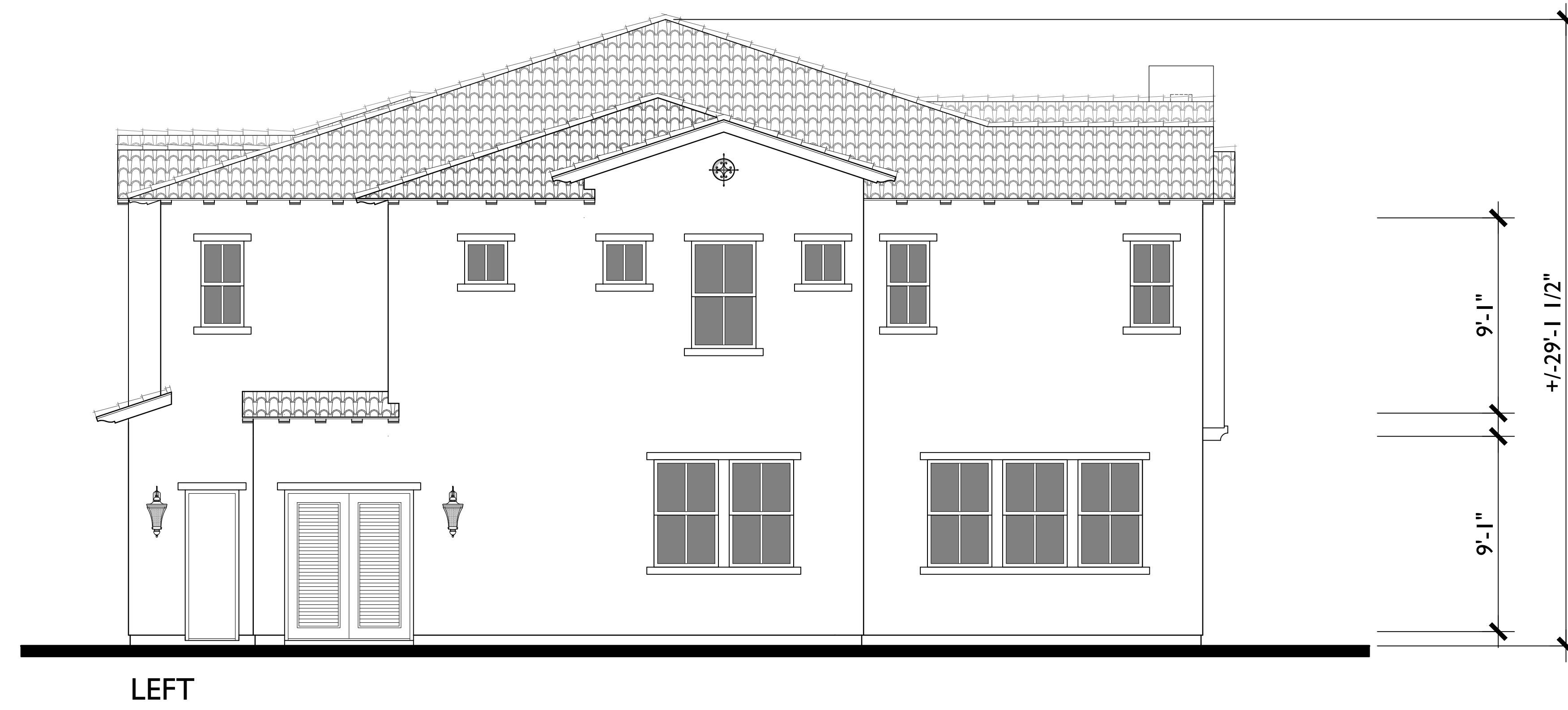
A
1/4"=1'-0"

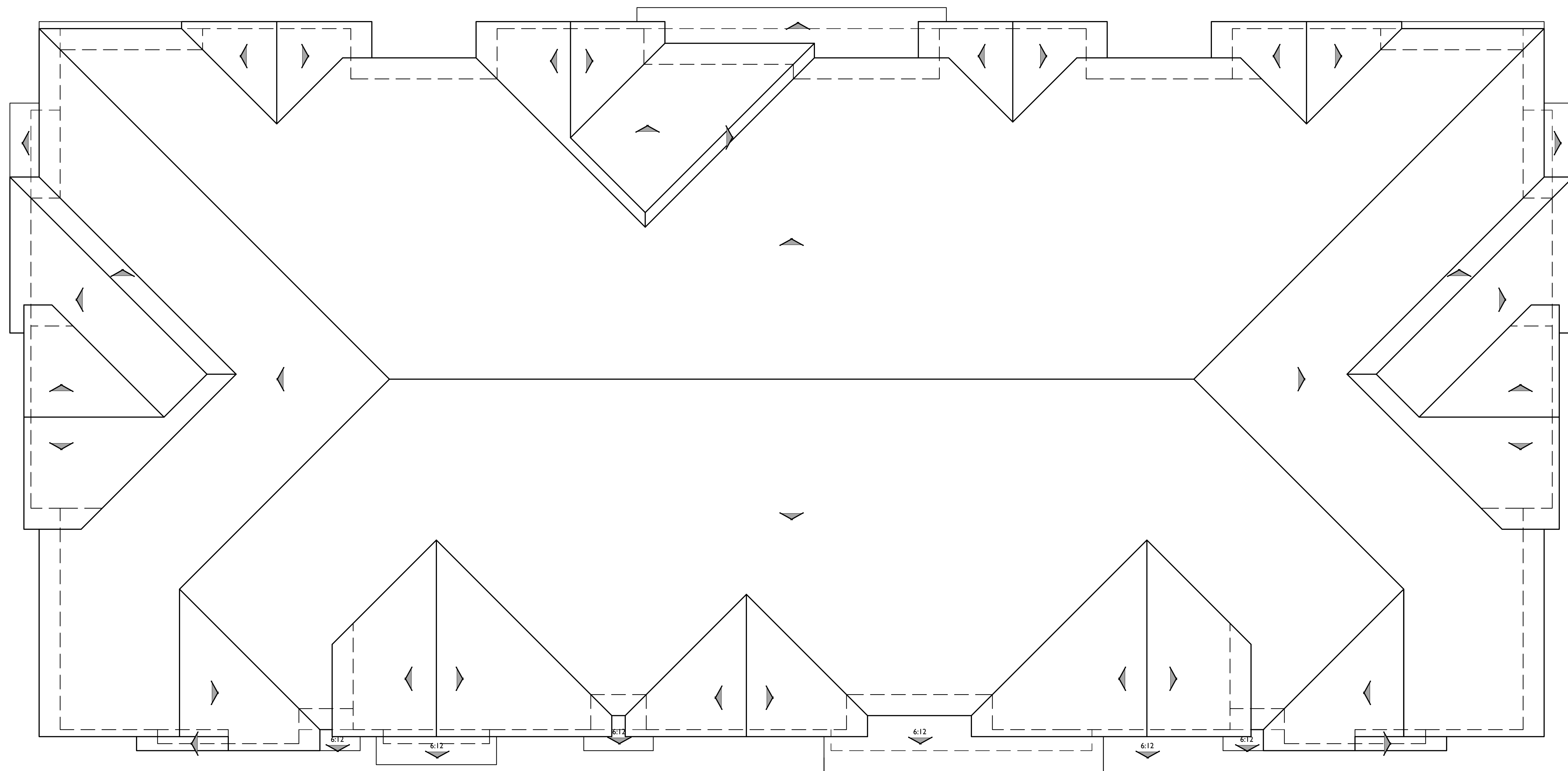
MATERIAL LEGEND

- | | | |
|---------------------------------------|-----------------------------|-------------------------------|
| A. CONCRETE S' TILE | H. WOOD RAFTER | Q. DECORATIVE CHIMNEY CAP |
| B. FLAT CONCRETE TILE | I. BRICK VENEER | R. COMPOSITE DOOR |
| C. ROLL-UP GARAGE DOOR | J. BRICK TRIM | S. WOOD FASCIA |
| D. SMOOTH FINISH STUCCO | K. FOAM TRIM | T. VINYL WINDOWS |
| E. COMPOSITE SHUTTER | L. DECORATIVE LIGHT FIXTURE | U. HORIZONTAL LAP SIDING |
| F. DECORATIVE GABLE END DETAIL | M. WOOD POST | V. DECORATIVE METAL POT SHELF |
| G. SIMULATED WOOD, SHAPED FOAM CORBEL | N. HARDIE PANEL | W. STONE VENEER |
| | O. METAL RAILING | |
| | P. DECORATIVE TILE | |



REAR





ROOF PLAN

PITCH: 4:12 U.N.O
 RAKE: 6"
 EAVE: 18"
 ROOF MATERIAL: CONCRETE 'S' TILE

A
 1/8"=1'-0"



FRONT

B
1/4"=1'-0"

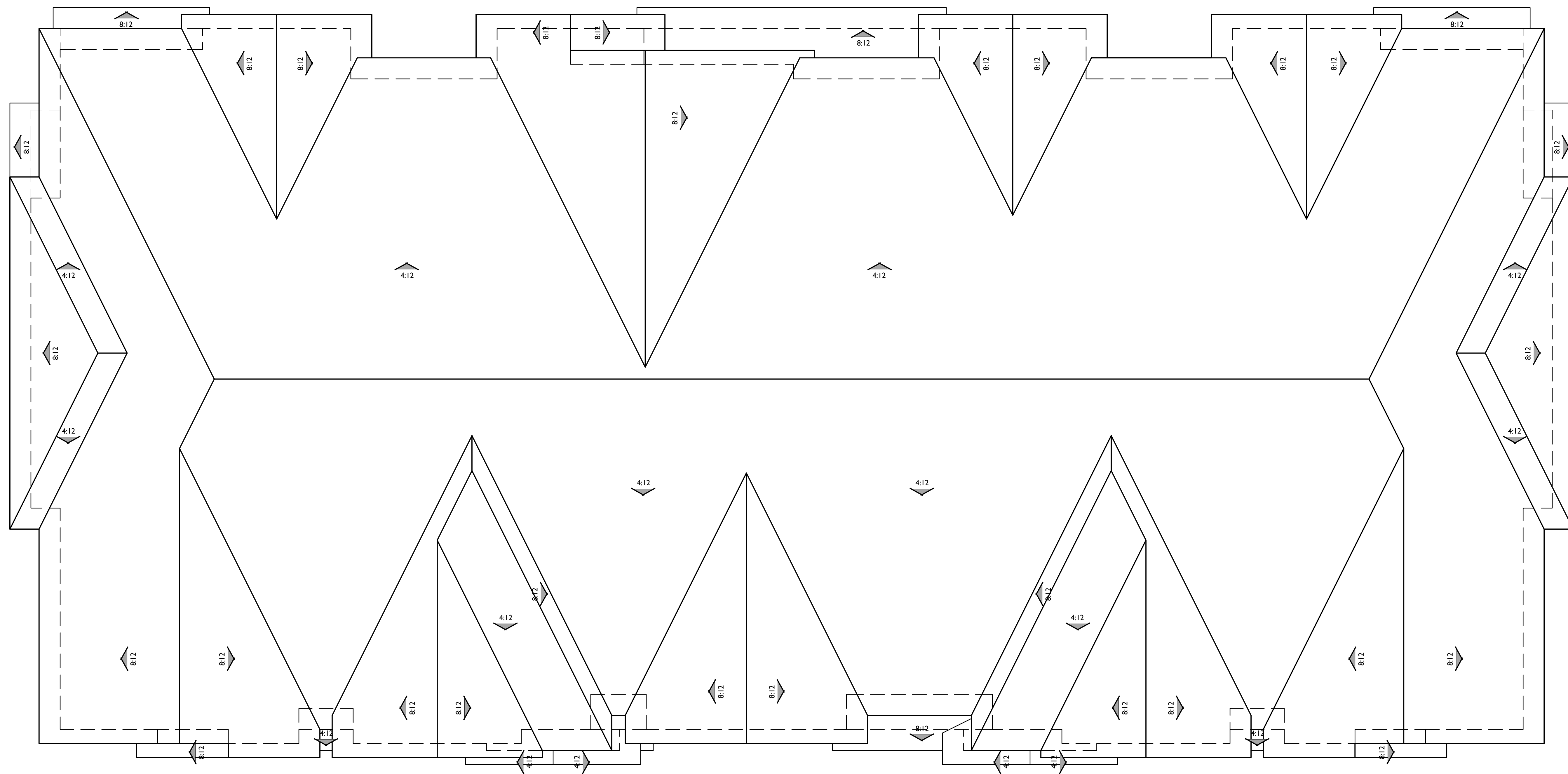
MATERIAL LEGEND

- | | | |
|---------------------------------------|-----------------------------|-------------------------------|
| A. CONCRETE S' TILE | H. WOOD RAFTER | Q. DECORATIVE CHIMNEY CAP |
| B. FLAT CONCRETE TILE | I. BRICK VENEER | R. COMPOSITE DOOR |
| C. ROLL-UP GARAGE DOOR | J. BRICK TRIM | S. WOOD FASCIA |
| D. SMOOTH FINISH STUCCO | K. FOAM TRIM | T. VINYL WINDOWS |
| E. COMPOSITE SHUTTER | L. DECORATIVE LIGHT FIXTURE | U. HORIZONTAL LAP SIDING |
| F. DECORATIVE GABLE END DETAIL | M. WOOD POST | V. DECORATIVE METAL POT SHELF |
| G. SIMULATED WOOD, SHAPED FOAM CORBEL | N. HARDIE PANEL | W. STONE VENEER |
| | O. METAL RAILING | |
| | P. DECORATIVE TILE | |



REAR





ROOF PLAN

PITCH: 8:12 U.N.O.
 RAKE: 12"
 EAVE: 18"
 ROOF MATERIAL: FLAT CONCRETE TILE

B
 1/8"=1'-0"



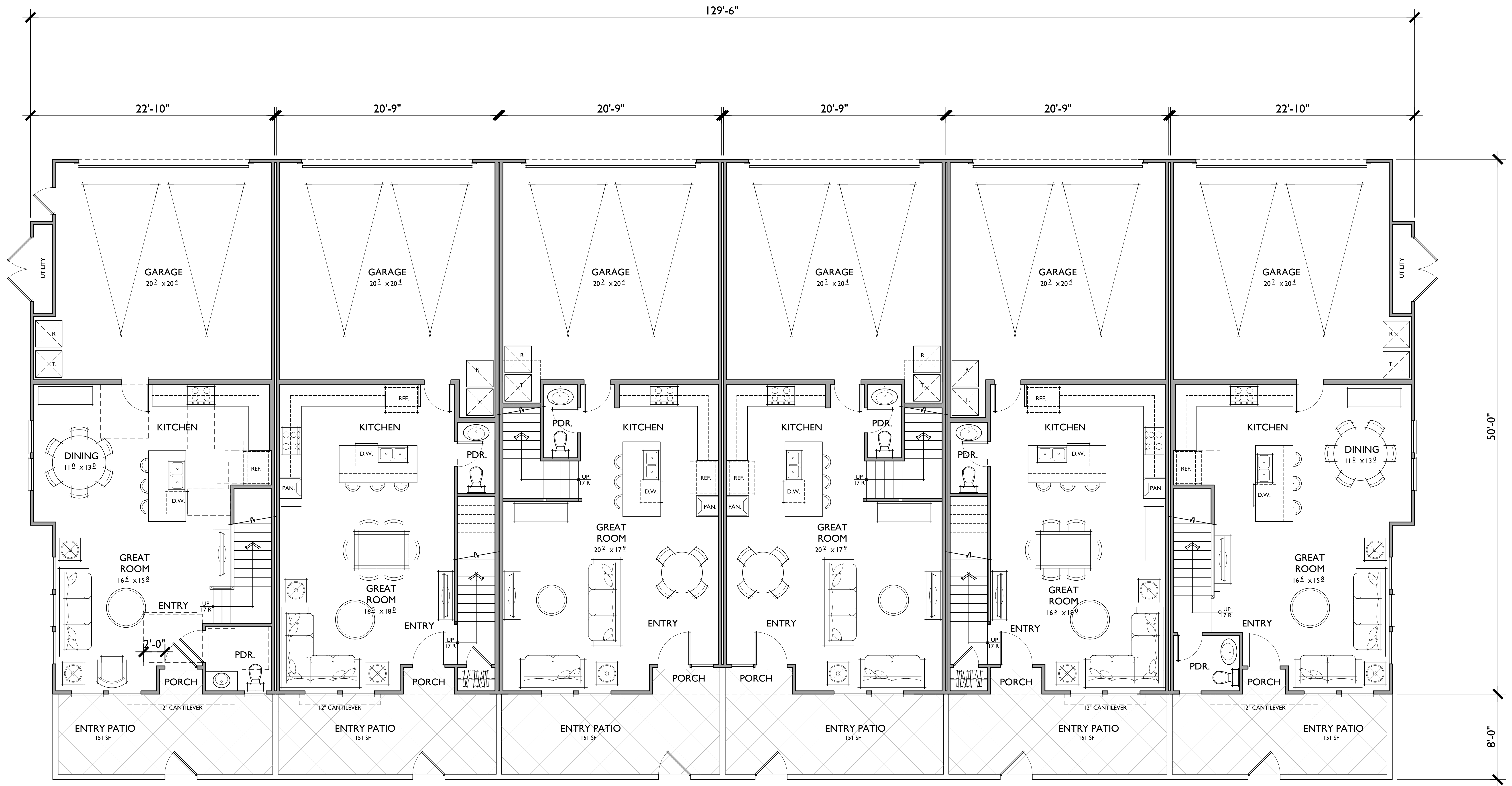
FRONT

A
1/4"=1'-0"



FRONT

B
1/4"=1'-0"



PLAN 3 (accessible)
3 BR / 2.5 BA
1,640 S.F.

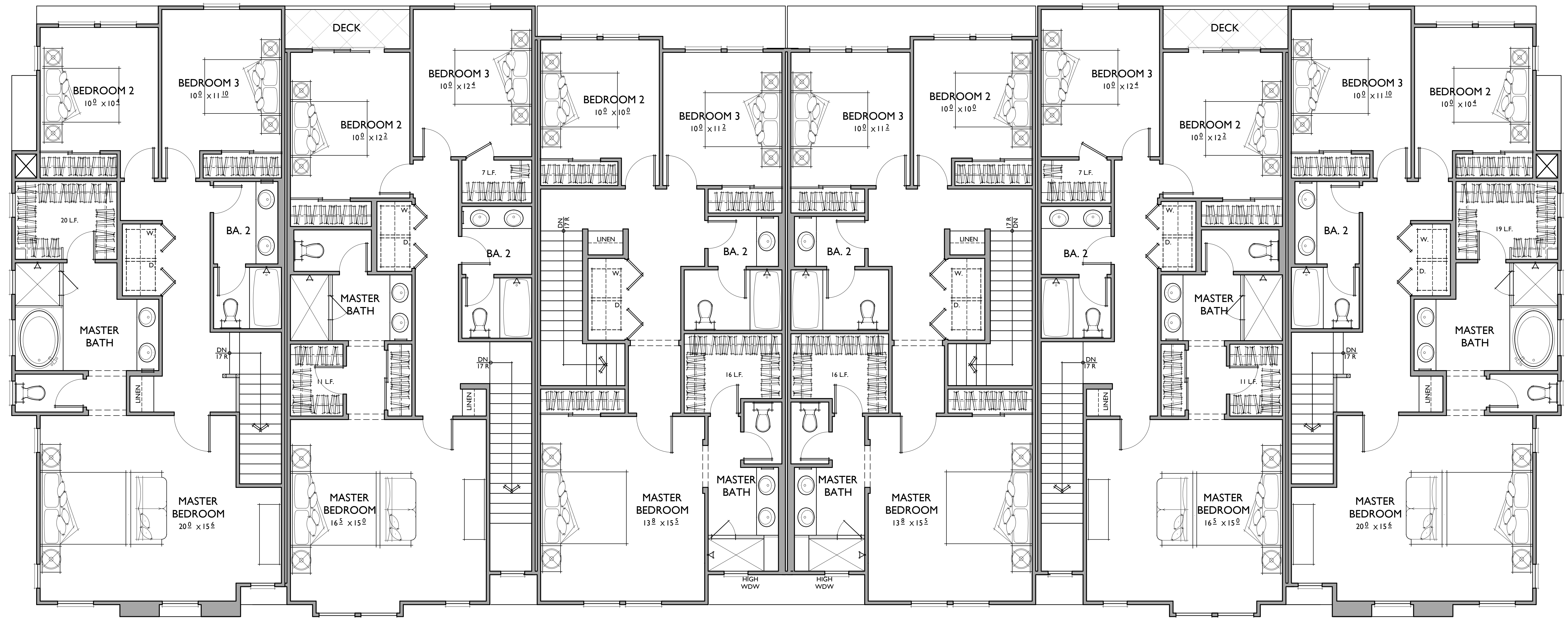
PLAN 2
3 BR / 2.5 BA
1,509 S.F.

PLAN 1
3 BR / 2.5 BA
1,472 S.F.

PLAN 1
3 BR / 2.5 BA
1,472 S.F.

PLAN 2
3 BR / 2.5 BA
1,509 S.F.

PLAN 3
3 BR / 2.5 BA
1,640 S.F.



PLAN 3

PLAN 2

PLAN 1

PLAN 1

PLAN 2

PLAN 3

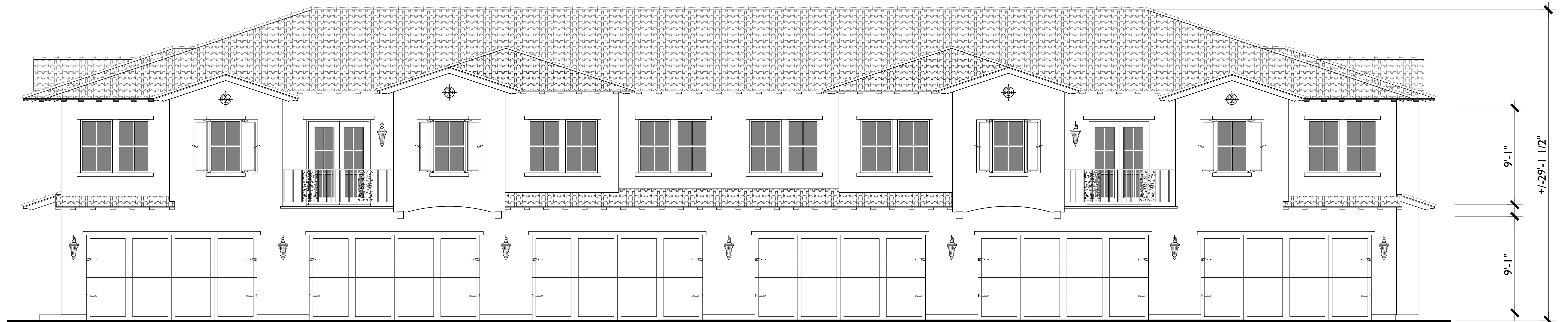


FRONT

A
1/4"=1'-0"

MATERIAL LEGEND

- | | | |
|---------------------------------------|-----------------------------|-------------------------------|
| A. CONCRETE 'S' TILE | H. WOOD RAFTER | Q. DECORATIVE CHIMNEY CAP |
| B. FLAT CONCRETE TILE | I. BRICK VENEER | R. COMPOSITE DOOR |
| C. ROLL-UP GARAGE DOOR | J. BRICK TRIM | S. WOOD FASCIA |
| D. SMOOTH FINISH STUCCO | K. FOAM TRIM | T. VINYL WINDOWS |
| E. COMPOSITE SHUTTER | L. DECORATIVE LIGHT FIXTURE | U. HORIZONTAL LAP SIDING |
| F. DECORATIVE GABLE END DETAIL | M. WOOD POST | V. DECORATIVE METAL POT SHELF |
| G. SIMULATED WOOD, SHAPED FOAM CORBEL | N. HARDIE PANEL | W. STONE VENEER |
| | O. METAL RAILING | |
| | P. DECORATIVE TILE | |



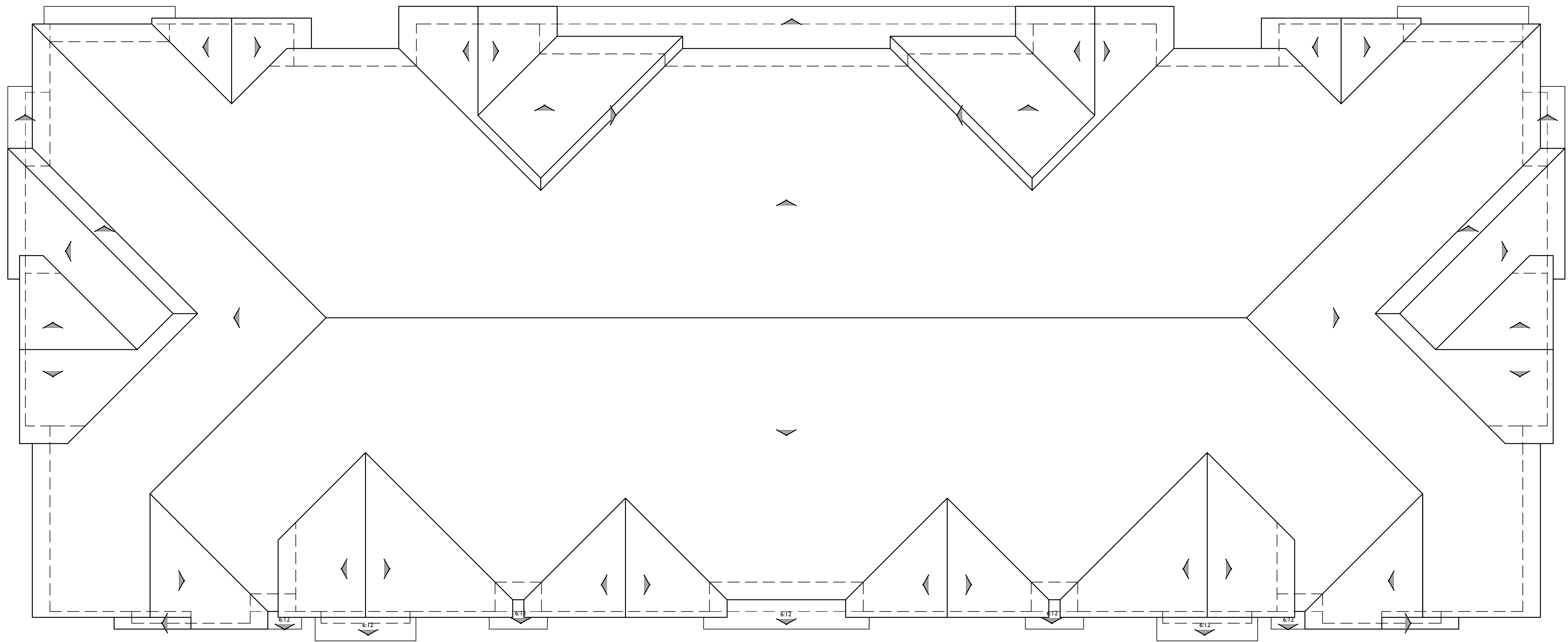
REAR



LEFT



RIGHT



ROOF PLAN

PITCH: 4:12
 RAKE: 6"
 EAVE: 18"
 ROOF MATERIAL: CONCRETE S' TILE

A
 1/8"=1'-0"



FRONT

B
1/4" = 1'-0"

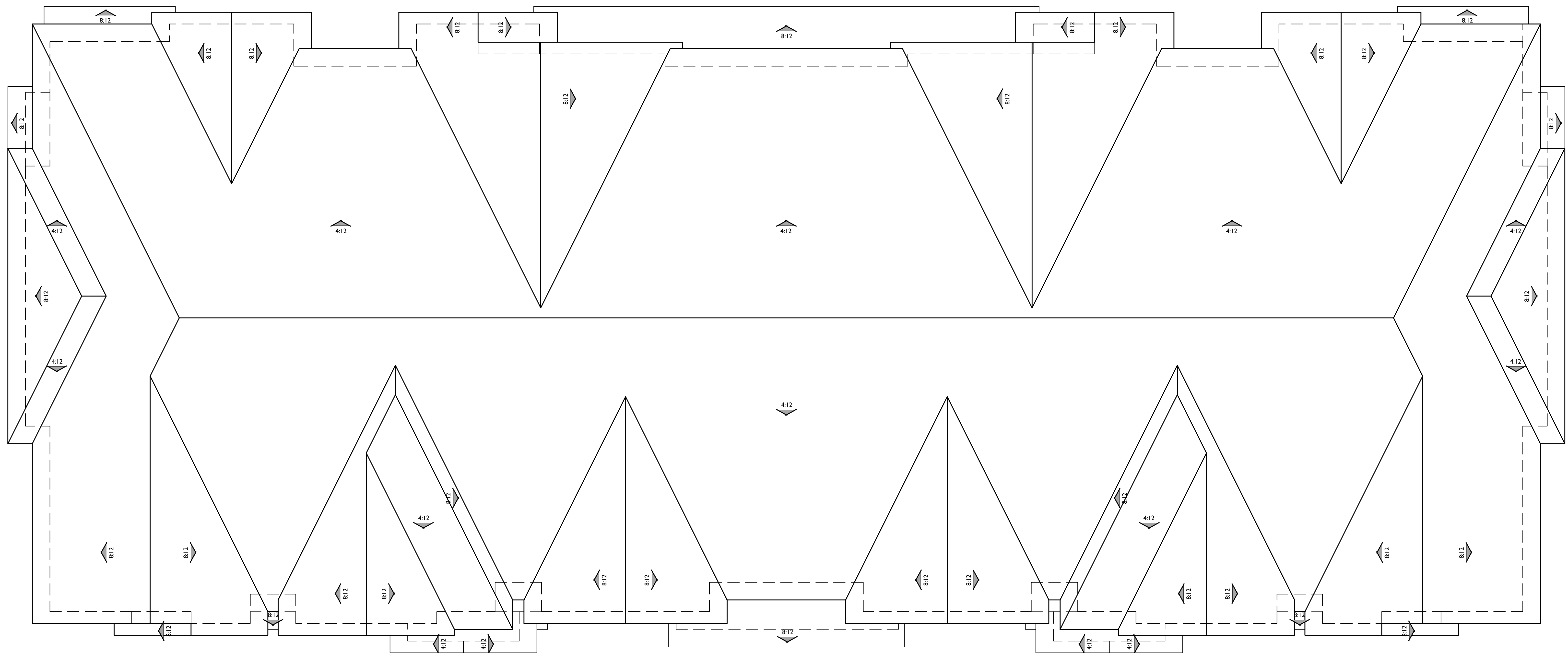
MATERIAL LEGEND

- | | | |
|--|-----------------------------|----------------------------------|
| A. CONCRETE S' TILE | H. WOOD RAFTER | Q. DECORATIVE CHIMNEY CAP |
| B. FLAT CONCRETE TILE | I. BRICK VENEER | R. COMPOSITE DOOR |
| C. ROLL-UP GARAGE DOOR | J. BRICK TRIM | S. WOOD FASCIA |
| D. SMOOTH FINISH STUCCO | K. FOAM TRIM | T. VINYL WINDOWS |
| E. COMPOSITE SHUTTER | L. DECORATIVE LIGHT FIXTURE | U. HORIZONTAL LAP SIDING |
| F. DECORATIVE GABLE END
DETAIL | M. WOOD POST | V. DECORATIVE METAL POT
SHELF |
| G. SIMULATED WOOD, SHAPED
FOAM CORBEL | N. HARDIE PANEL | W. STONE VENEER |
| | O. METAL RAILING | |
| | P. DECORATIVE TILE | |



REAR





ROOF PLAN

PITCH: 8:12 U.N.O.
 RAKE: 12"
 EAVE: 18"
 ROOF MATERIAL: FLAT CONCRETE TILE

B

1/8"=1'-0"