

**ANTIOCH**  
**CALIFORNIA**  
**OPPORTUNITY LIVES HERE**

**ADDENDUM NO. 1**

**TO  
CONTRACT DOCUMENTS  
FOR  
PREWETT PARK CONCRETE IMPROVEMENTS, PHASE IV  
in  
ANTIOCH, CALIFORNIA  
P.W. 567-17**

**ISSUED  
January 22, 2025**

This Addendum No. 1 must be signed by the bidder and attached to the CONTRACT PROPOSAL PACKAGE for consideration by the City. The City reserves the right to disregard any proposal, which does not include this Addendum. The City may waive this requirement at its sole discretion.

**SEE ATTACHED ADDENDUM ITEMS**

Prepared By: \_\_\_\_\_

Scott Buenting, P.E.



**BIDDER'S CERTIFICATION**

**I acknowledge receipt of this Addendum No. 1 and accept all conditions contained herein.**

\_\_\_\_\_  
Bidder

\_\_\_\_\_  
By:

**ADDENDUM NO. 1**  
**to**  
**CONTRACT DOCUMENTS**  
**for**  
**PREWETT PARK CONCRETE IMPROVEMENTS, PHASE IV**  
**in**  
**ANTIOCH, CALIFORNIA**  
**P.W. 567-17**

**Issued January 22, 2025**

Q1) What is the recommended polymer primer coat and color coat product?

A1) Enduro-Kote by Enduro Products

Q2) What is the preferred solvent-based clear seal?

A2) Enduro-Kote Sealer by Enduro

Q3) Should the aluminum oxide non-skid layer meet any specific standards or brand requirements?

A3) Aluminum oxide non-skid layer should meet the following requirements:

1. Standards for Slip Resistance

- ASTM Standards: The non-skid layer should comply with ASTM standards, such as ASTM D2047 (for slip resistance) or ASTM F1679 (for wet and dry slip resistance testing).
- Pendulum Test Value (PTV): A PTV of 36 or higher is often recommended for wet areas.
- Coefficient of Friction (COF): A minimum COF of 0.6 for flat surfaces and 0.8 for ramps is a common guideline.

2. Durability

- Resistance to chlorine, UV exposure, and constant moisture is crucial for maintaining the integrity of the non-skid surface in a water park.

3. Hygiene Standards

- The material should be non-porous to prevent mold and bacterial growth, and easy to clean.

**APPENDIX "A"**

**STAIR AND CONCRETE FLATWORK DETAILS**

CONSTRUCTION JOINTS: SAME AS EXP. JT

#4 DOWEL 18" LONG  
@24" PVC  
SLIP JT. @ ONE END  
12" MIN CLR FROM  
PAVING EDGES

FOR FINISH, SEE PAVING PLANS

EXP JT 1/2" W.

PREMOLDED JT FILLER MATERIAL,  
RECESS FROM TOP OF SLAB SEAL  
WITH URETHANE SEALANT, COLOR  
TO MATCH ADJACENT PAVING

WEAKENED PLAN JT

WEAKENED PLAN JT. 1/4" WIDE  
DEPTH = 1/4 CONC. THICKNESS + 1/4"

SCORELINE 3/16" W X 1/2" DEEP

#4 REBAR @ 18" O.C. W

COMPACTED SUBGRADE  
3' MIN. IMPORT FILL

SEE GOLS REPORT

NOTE = SEE GHT.  
LI. FOR PAVING  
DESIGNATION

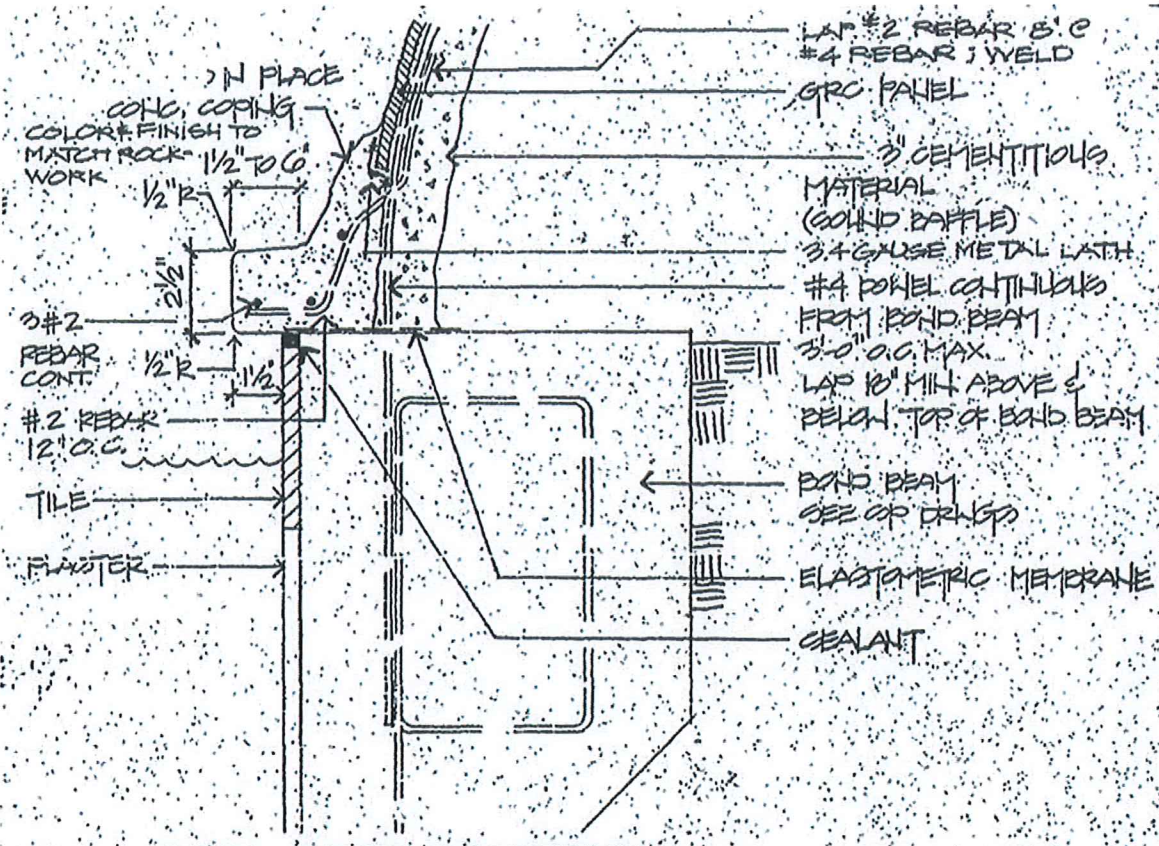
	CONC. DEPTH	COMPRESSIVE STRENGTH @ 28 DAYS
PEDESTRIAN PAVING	4"	2500 PSI
AMBULANCE & SERVICE TRUCK	6"	4000 PSI
FIRE TRUCK	6"	4000 PSI

6

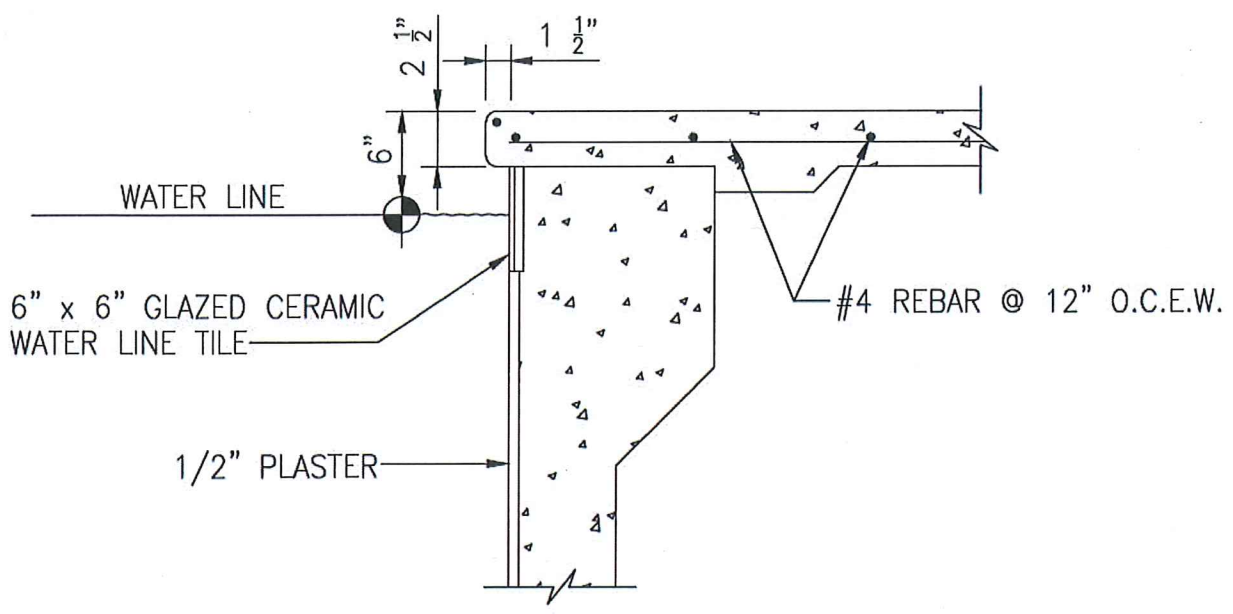
CONC. PAVING SECTION

1" = 1'-0"





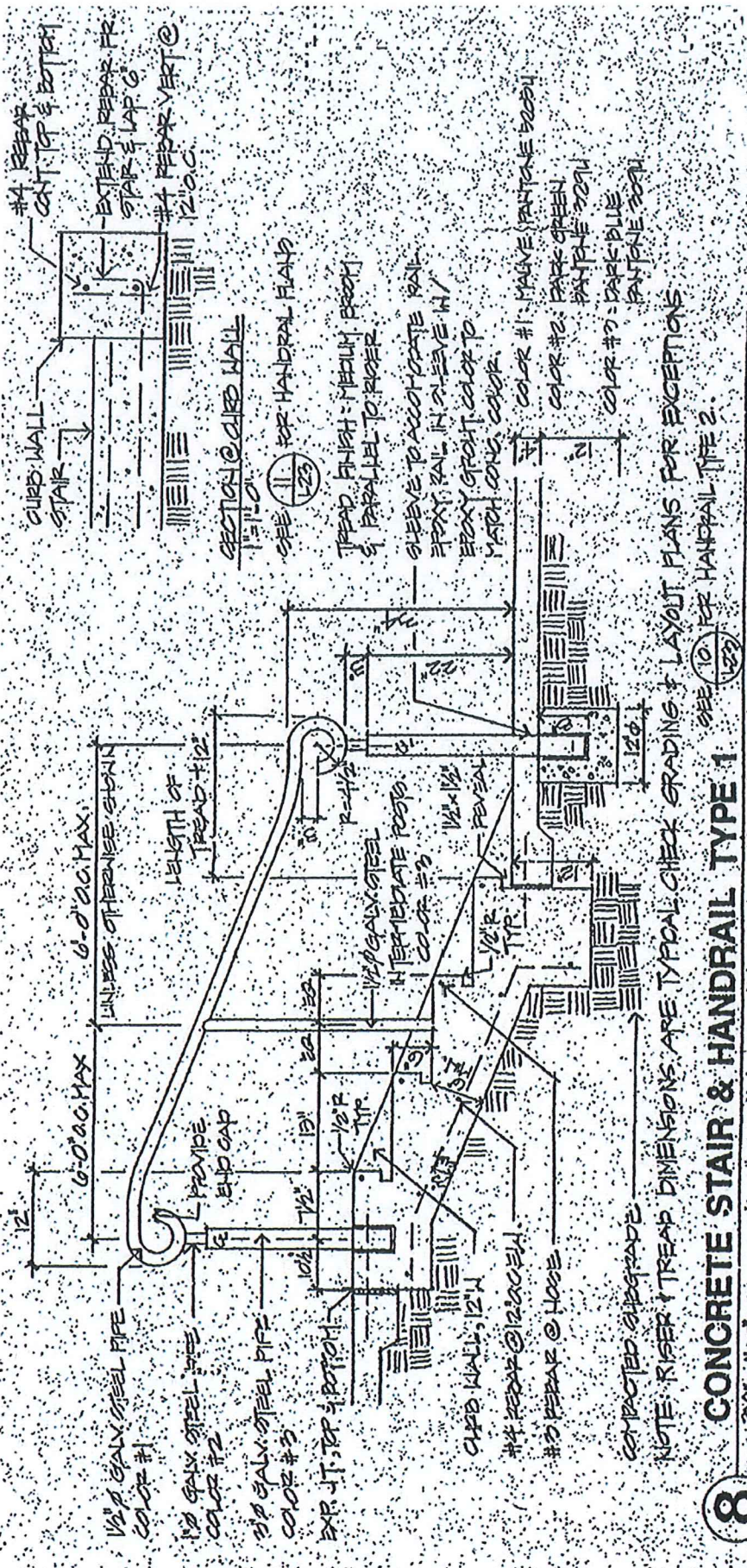
**5 POOL EDGE CONDITION**  
 3" = 1'-0"



NOTE: DECK EDGE SHALL HAVE 1/2" RADIUS

**B-1 TYPICAL DECK EDGE**  
 SCALE: 1 1/2" = 1'-0"





NOTE: RISER & TREAD DIMENSIONS ARE TYPICAL CHECK GRADING & LAYOUT PLANS FOR EXCEPTIONS  
 SEE 10 FOR HANDRAIL TYPE 2.

**8 CONCRETE STAIR & HANDRAIL TYPE 1**

3/4" = 1'-0"

COMPACTED SUBGRADE

#4 REBAR @ 12" O.C.

#3 REBAR @ 12" O.C.

CURB WALL, 12" H

EXP. JT. TOP & BOTTOM

3" GALV. STEEL PIPE  
COLOR #3

1" GALV. STEEL PIPE  
COLOR #2

1/2" GALV. STEEL PIPE  
COLOR #1

PROVIDE  
END CAP

UNLESS OTHERWISE SHOWN  
0'-0" O.C. MAX.

LENGTH OF  
TREAD #12

1/2" GALV. STEEL  
INTERMEDIATE POSTS  
COLOR #3

1/2" R REVEAL

1/2" R TIP

1/2" R TIP

1/2" R TIP

1/2" R TIP

1/2" R TIP

1/2" R TIP

1/2" R TIP

1/2" R TIP

1/2" R TIP

1/2" R TIP

1/2" R TIP

1/2" R TIP

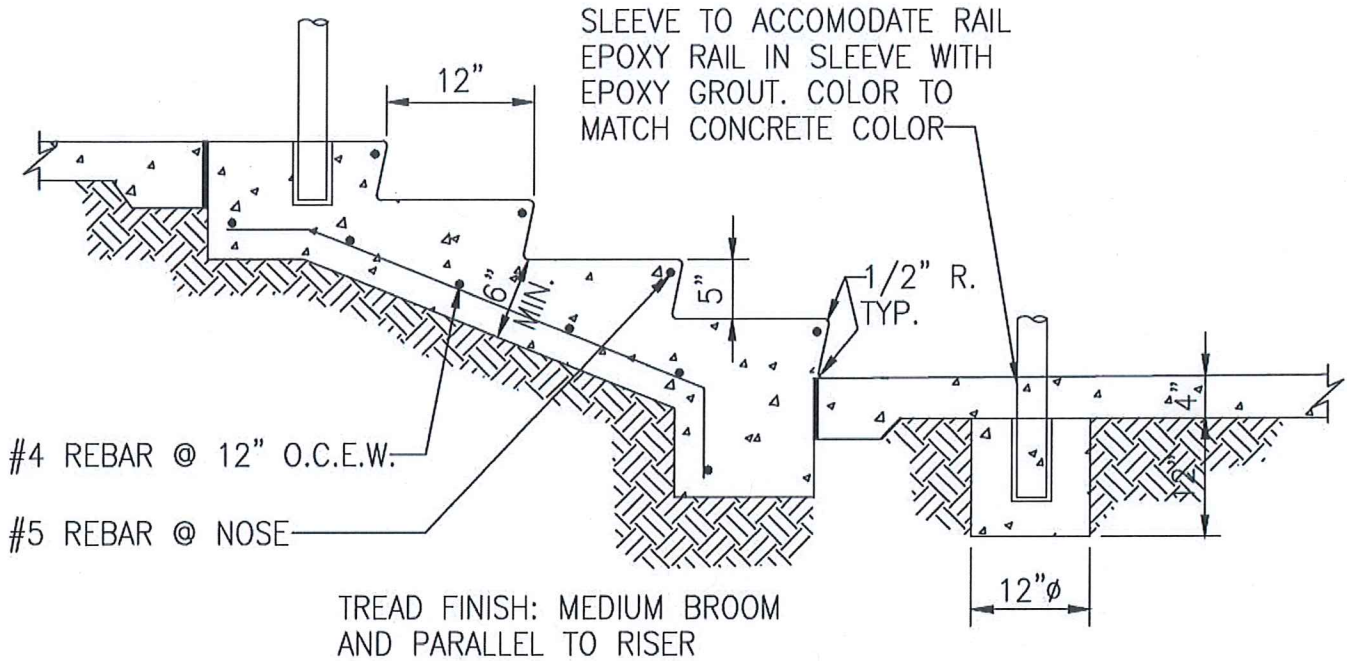
1/2" R TIP

1/2" R TIP

1/2" R TIP

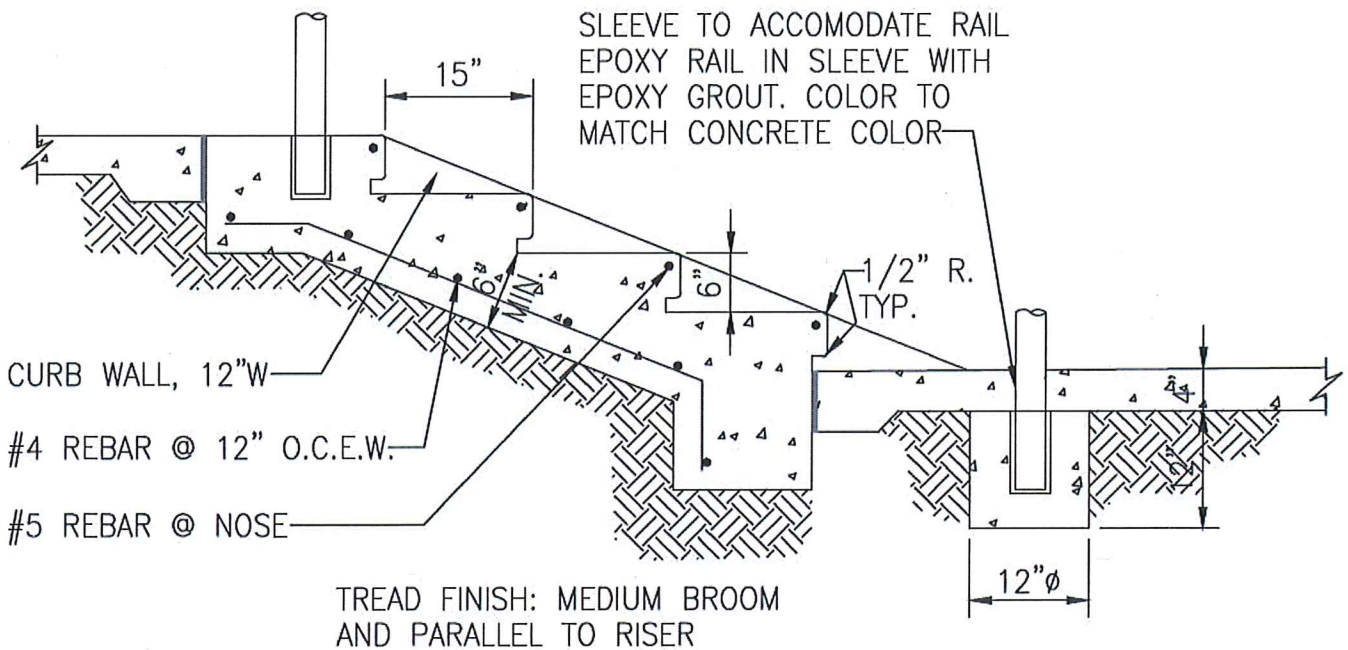
1/2" R TIP





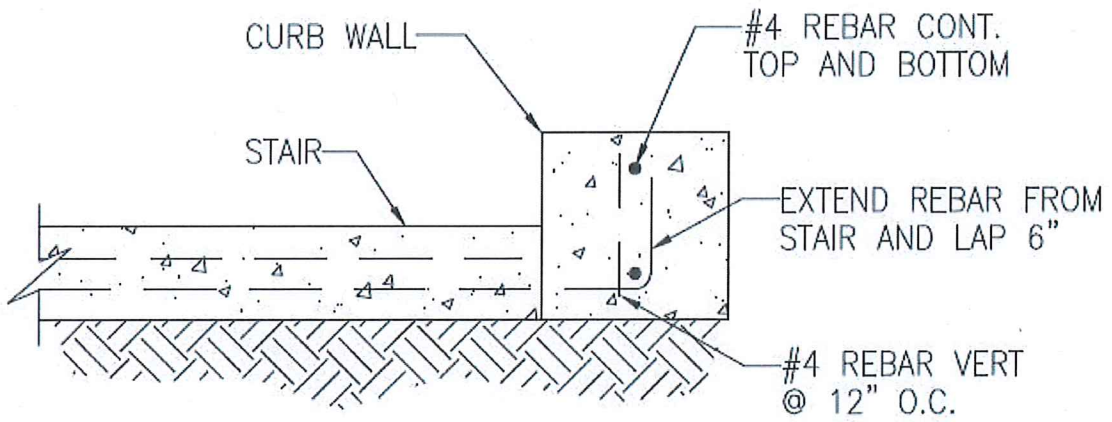
E-1 CONCRETE STAIR DETAIL

$3/4" = 1'-0"$



E-2 CONCRETE STAIR DETAIL

$3/4" = 1'-0"$



SECTION AT CURB WALL

1" = 1'-0"